

# December 2008 Newsletter

## Bylaws Change

LAA Bylaws reveal that the Officers of the Board consist of Pres., Vice Pres., Sec., Treas., Program Chair and Membership Chair. At our recent board meeting, we recommended expanding the officers to include a Communications Chair. That person would be Web Site Director, and/or Newsletter Editor, and/or Publicity Chair. This change was approved at the Nov. 18<sup>th</sup> meeting.

You can refer to the current bylaws at [www.landingsart.org](http://www.landingsart.org).

## .Gifts of Art



David Ryden

Give the Gift of Art this holiday season! Ten percent of every artwork sold at the Plantation Club Gallery in December will go to the charity of the buyer's choice. Everyone wins- the artist, the buyer and the charity. Last year, many charities benefited and few art works were left. Shop early!

The show will be hung on Tuesday, December 2 from 10-12.

Each artwork will be marked with the artist's name, phone number, medium used and price. Each interested buyer should call the artist directly and arrange to meet the artist at Plantation to pick up their artwork. In its place, the artist will hang a white snowflake stating which charity received a donation. Give a unique Gift of Art from a Savannah artist and your favorite charity will benefit.



Sally Clark

Two of the artworks that will be in the show are pictured here. LAA members and guests will celebrate at their Holiday event on Tuesday evening when all the prospective gifts are in place. Our hope is that the snowflakes replacing the sold artwork will adorn the walls of Plantation Gallery.

## Merrill Lynch Atrium Gallery

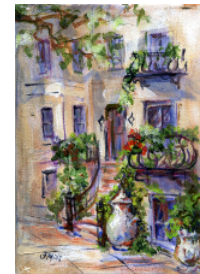
### Rochelle Frank

Please bring your artworks for the Merrill Lynch Atrium Gallery display on Wednesday, December 3, from 3:00-5:00 p.m. The works presently there are due to come down the same time. All the

art to be hung at Merrill Lynch in December is also eligible for the "Gift of Art" program. If anyone cannot make it on Wednesday and would like to participate, please call Rochelle Frank, 598-2179, and we will make arrangements to bring your art to ML.

## January at the JEA

Vicky Hennie, Frances Mills, Penny Sebrell and Joyce Weinzettel will exhibit their work at the JEA January 3-29, 2009. You are invited to a reception *Sunday, January 11, 3:00 – 5:00 p.m.* at the Jewish Educational Alliance, 5111 Abercorn St., 355-8111.



Frances Mills



Joyce Weinzettel



Penny Sebrell



Vicky Hennie

**Sally Clark**  
**November-December**  
**Hospice House Art Gallery**  
**1352 Eisenhower Drive**

Colorful and contemporary water media and collage by local abstract artist, *Sally Clark*, will hang through the end of the year

at the Hospice House Art Gallery,  
1352 Eisenhower Drive.

### **The Landings Company**



*Suzanne Croci*

During January and February, The Landings Company will display the paintings of **Suzanne Croci**. A graduate of Ohio State University with a M.S. in Nursing, she was a nurse educator. She began painting in acrylic while her husband was an ophthalmology resident. She has studied drawing and painting with artists in Columbus and Athens, Ohio, St. Petersburg, Sarasota, and Savannah. She received an award in the 2004 spring art show and is currently President of the LAA.

### **Rotary Club Seeking Donation of Art**

The Annual Rotary Reverse Raffle Charity Benefit will be held at the Plantation Club on March 10, 2009. They are again hoping to receive donations of art for their silent auction. Many members of LAA have been generous in the past. The money raised goes to local, district and international Rotary projects with special emphasis on charities which include *Bethesda Home for Boys*, *Safe Shelter*, *Second Harvest Kid's Café* and numerous projects in our local schools.

Skidaway Rotary greatly appreciates and thanks LAA for

its continued support and partnership. You can contact Suzanne Croci, 598-2876, or Tom McGoldrick, 598-7888 (longpoint31410@yahoo.com) with your intentions.

### **S.P.A.C.E Gallery**

The LAA has been invited to exhibit as a group in the city of Savannah *S.P.A.C.E. Gallery* located at 9 W. Henry St. The exhibit will run from July 7 - August 21, 2009 under the general theme, "Interpretations in Color". Community outreach in the form of teaching a class at the gallery's summer art camp for children will be performed by interested artists. Participating Artists must sign an individual exhibition contract available on the LAA website and submit to any LAA board member by Friday, January 30, 2009. Details to follow.

### **Barbara Kellogg**



*Milkweed Song: acrylic and ink on rice paper, 18-3/4x25-1/4*

### **"Painting in a Series"**

Workshop with Barbara Kellogg  
Skidaway Island State Park  
Building

Mon. Mar 30- Thurs. Apr 2  
9-3 each day

Fee: \$300

Coordinator: Sally Clark, 9723  
[tasclark@aol.com](mailto:tasclark@aol.com)

Barbara Kellogg creates semi-abstract paintings using Lana Watercolor paper, Sekishu rice paper and Holbein Acryla Gouache paint. Line and texture are both important elements in her art and are often inspired by simple gestures in nature such as the turn of a leaf or twist of a branch. Kellogg has been an active artist for over three decades and has developed an extensive resume of exhibitions, awards, publications and teaching experience. Her education includes a B.F.A. in Painting from Syracuse University and three decades of classes with artists Nicholas Reale, Edward Betts and Glenn Bradshaw. Kellogg resides in Fayetteville, NY and is a member of the National Watercolor Society, the CNY Watercolor Society and the Cazenovia Watercolor. Quote from Sally: "I guarantee participants will have a wonderful four days. . . not necessary to be an abstract artist. She is very good on design and composition. She suggests that we have no oil paint, but acrylic is permitted."

### **2009-2010 Artist of the Month**

Persons interested in being Artist of the Month at Plantation Gallery in 2009-2010 are to contact Rochelle Frank, [ar\\_frank@msn.com](mailto:ar_frank@msn.com), 598-2179, or Carrie Kellogg, 598-4372, [edandcarrie@bellsouth.net](mailto:edandcarrie@bellsouth.net).

Applications must be received between January 1st and March 15th, 2009. The LAA Board will announce its decision after the April board meeting.

Application Requirements:

1. Biography of 200-300 words.
2. Two digitals of artist's work, 5"x7" with resolution of 300 dpi.

3. Coordinators will assist artists with issues relating to digital images if necessary.
4. Member of LAA for at least one year.
5. Have not exhibited at Plantation for over two years.
6. Adequate number of artworks properly framed.
7. Precedence given to those who have never been AOM.
8. Artists encouraged to exhibit in twos or threes if applications exceed space.
9. All regulations about hanging on the member wall apply to AOM except size and delivery times. These will be agreed upon with Fran Leighton, chairperson.

### **2008 Gift of Volunteers**

Yes, it is a struggle to find people to help with the LAA because we have so many creative but busy persons. Volunteering requires that you give up some of your time, but when we all chip in, it is easier for everybody. We have 259 members and would like for them to have an opportunity to share their talents on committees or on the Board. We hope you have expressed your willingness to help out this exciting association. Your enthusiasm and energy will keep it that way.

Hats off to **Sally Jones** for the many hours she offers for her labeling and signing in of monthly art at Plantation Gallery for both walls as well as the Fall and Spring Art Shows at Merrill Lynch Gallery. **Fran Leighton** has been a gem in chairing the Plantation Gallery and writing monthly releases for the *Landings Journal*, *Skinnie*, and *TWATL*. You see **Pete Arrowsmith** each month hanging away at Plantation. His helpers include

**Dennis Roth** and **Phil Lavelly**. You all are great to give **Peggy Hale** a welcome rest.

**Rochelle Frank** has organized the Merrill Lynch Atrium Gallery. She also is running the Artist of the Month Selection Committee. No doubt, this takes lots of her time.

**Lind Hollingsworth** took on the Fall Merrill Lynch Show. She had the assistance of **Sid Daniell** who chaired this the previous year. So many members helped them make this so successful.

**Shirley Daniell** chaired the Fall Sidewalk Sale with the help of **Mimi Diamond**. **Peggy Hale** and **Sue Jessup** spent two hours in the pouring rain, taping the 45 spaces ten feet apart on the day before the sale.

**Paulette Cliff** organized a wonderful pastel workshop. **Sandy** and **Dryden Murck** managed the Landings booth at the Landlovers' holiday boutique. **Kareen Boyce** and **Connie Shippy** are busy arranging our holiday celebration. **Grace Rohland** is taking care of the video library.

**Ching Levy** emailed me saying: "Look what Kate has done on the homepage and other pages of [landingsart.org](http://landingsart.org). Fabulous. **Kate (Greene Gray)** has been doing great job for LAA and we all appreciate her effort and time. I believe that more members are checking our high-caliber website each day. Salute to Kate!" Ching began as webmaster with Kate but had to leave for Taiwan due to her mother's illness.

The efficiency and organization of our Newsletter editor, **Joyce**

**Weinzettel**, is super. She seems to do it with such ease. A round trip to Skidaway is 30 miles for her so she is doing her part online.

I hope you thank **Paulette Cliff** and **George Staimer** for making the Spring Art in the Park and Spring Art Show possible. In addition, we hope you participate by helping them make these a successful experience.

We are blessed to have persons who share their talent behind the scenes. Our Board does much work to keep our wonderful organization on a roll. So thanks to you all. We appreciate your gift.

*Suzanne Croci, President*

### **Old Artist Supplies Needed for Notre Dame Academy**

If you have old brushes, paints, canvas, paper, books etc., would you be willing to donate them for use at Notre Dame Academy. We are trying to help with some side art projects at the school. This center city school has very little money for the program and it would be greatly appreciated. Call Tina Austing 598-0029 and she will pick them up, or you can drop them at her front door, 7 Windlass Ct. Thank you very much! Wish list follows.

- Newspapers
- Magazines
- Old postcards or fronts of greeting cards
- Old coffee table books (anything with photographs or art prints)
- Any prints or posters of famous paintings
- Large old t-shirts or button down shirts to be used as smocks

- Plastic gallon sized milk jugs
- Buttons
- Scraps of wrapping paper, tissue paper, or wall paper
- Felt of any color
- Yarn, string, ribbon
- Empty glass jars (like from spaghetti sauce)
- Paper towel tubes
- Shoeboxes
- Extra paper towels, Clorox wipes, cleaning supplies, or hand wipes to help us keep the classrooms neat!
- Paint- tempera, acrylic, or spray paint
- Tacky craft glue
- Paint brushes
- Clay
- Paper- construction, tracing, or heavy white paper
- Any other craft item

**Our CD/DVD Library**  
**2008 Acquisitions**

Grace Rohland, Librarian

- 51cd Biolchini, G: Painting With Pastel
- 52cd Burrige, R: Loosen Up With Acrylics
- 53cd Biolchini, G: Plein Air With Pastel
- 54cd Cambridge, M: Success With Oils
- 55cd Cooper, C: Small Paintings, Big Results
- 56cd Harrington, C: Acrylics, W/C Alternative
- 57cd Howard, K: Inspired by Light/Painting in Oils
- 58v O'Keefe, G: Women in Art
- 59cd Reid, C: Watercolor Secrets
- 60cd Rogers, J: Expressive Watercolor Portraits
- 61v Stein, A: Painting A Mexican Church
- 62v Stobart, J: 6 hrs of viewing from 1993
- 63cd Van Hasselt, T: Fun With Figures (WC)
- 64cd Van Hasselt, T: Mix Greens and Paint Foliage (WC)
- 65cd Wade, R.: Watercolor Workshop

**Missing Videos**

Please check your shelves.

- #2 Bonnard: Portrait of an Artist,
- #10 Greene: Color; Greene Method, 6/05
- #11 Greene: Portrait Drawing, 2/06
- #17 Labadie: Figure Painting in W/C, 10/06
- #28 Markos: Classical Portrait Painting, 2/06
- #34 Price: 1st Steps in Landscapes, 10/06
- #36 Reid: Still Life/Flowers, 7/05

- #37 Reid: Portraits In Watercolor, 7/05
- #38 Sargent: Oil Portraits, The Head, 3/06

**LAA Board**

***President***

Suzanne Croci 598-2876  
[crocis@bellsouth.net](mailto:crocis@bellsouth.net)

***Vice President***

Carl Kotheimer 598-2196  
[njcek@msn.com](mailto:njcek@msn.com)

***Secretary***

Nancy Dancu 5980434  
[nancydancu@bellsouth.net](mailto:nancydancu@bellsouth.net)

***Treasurer***

David Nutall 598-0120  
[anutall@bellsouth.net](mailto:anutall@bellsouth.net)

***Membership***

Juliann Murray 598-7686  
[julsinga@aol.com](mailto:julsinga@aol.com)  
Tina Austing 598-0029  
[ntausting@comcast.net](mailto:ntausting@comcast.net)

***Program***

Gail Wickstrom 598-2273  
[gail@wickmail.com](mailto:gail@wickmail.com)  
Lee Forbes 598-1942  
[sunshineinga@bellsouth.net](mailto:sunshineinga@bellsouth.net)

**2008-2009 Committees**

***Website***

Kate Greene Gray 598-5446  
[greenegrays@comcast.net](mailto:greenegrays@comcast.net)

***Newsletter***

Joyce Weinzettel 925-2097  
[jweinzettel@comcast.net](mailto:jweinzettel@comcast.net)

***Plantation Gallery:***

Head: Fran Leighton 9334  
[RFLFSL@bellsouth.net](mailto:RFLFSL@bellsouth.net)  
Hanging: Peter Arrowsmith 9598,  
[pdarrow@bellsouth.net](mailto:pdarrow@bellsouth.net)  
Sign-In and Labels: Sally Jones 5488,  
[sally4th@bellsouth.net](mailto:sally4th@bellsouth.net)

***Artist of the Month, Plantation Gallery:*** Rochelle Frank, 2179

***Video and CD Library:***

Grace Rohland 598-8217  
[mammarogra@aol.com](mailto:mammarogra@aol.com)  
***Workshop Coordinator***  
Paulette Cliff 598-9409

***Fall Merrill Lynch Show***

Lind Hollingsworth 925-5065  
Sid Daniell 598-2194  
**\*\* Thursday, Oct. 2 reception \*\***

***Fall Sidewalk Show***

Mimi Diamond 598-0710  
Shirley Daniell 598-2194

***Merrill Lynch Atrium Gallery***

Rochelle Frank 598-2179

***SPACE Gallery Proposal***

Carl Kotheimer 2196  
Kate Greene Gray 5446  
Grace Rohland 8217  
Suzanne Croci 2876

***Landings Company Gallery***

Phyllis Tildes 598-9125  
Sarah Lucas 598-7203

***Landlovers Boutique***

Sandy & Dryden Murck, 7404  
**\*\* Sat., Nov. 8 \*\***

***Christmas Party***

Allan & Karen Boyce 9363  
Dennis & Connie Shippy 5391  
**\*\* Tuesday, Dec. 2 \*\***

***Spring Art Show***

George Staimer 598-7297  
**\*\* Thursday, April 30, 2009\*\***

***Spring Art in the Park***

Paulette Cliff 598-9409

***Plein Aire Painting***

Charmaine West 598-0787  
Karen Macek 598-0097