

February 2010 Newsletter

General Membership Meeting

Tuesday, Feb. 16, 2010

6:30 p.m. B.Y.O.S.

Bring your own sandwich and join us at 6:30 p.m. prior to meeting. We want old and new members to get to know each other. Pop and chips and cookies will be provided. Please join us. Opportunity to view art videos is available also.

**7:30 p.m. Meeting
Skidaway Island
Presbyterian Church**

Tiffani Taylor

Her Art and Path



Nature is a cathedral where Divinity speaks in moments of beauty and inspiration. Tiffani Taylor transforms these moments into rich, textured paintings and original pottery. Lush and vibrant, Tiffani's art is a tribute to things the eye cannot see: the journey of life; inner beauty; feelings of gratitude, reverence, and appreciation.

Her paintings and pottery are inspired by nature and travel, particularly to Paris and Italy. They are a portrayal of her deep emotion in moments of beauty: sketching dancing red poppies while growing up in Utah; studying red cardinals outside her window at home in Savannah; viewing the Sistine Chapel; and stumbling upon an explosion of color at flower markets in Rome.

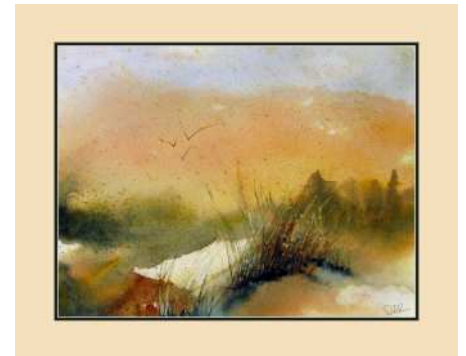
She begins each canvas with a foundation of base materials. She adds layer upon layer, taking the canvas into nature with each addition. Antique sheet music, handwritten recipe cards, ancient maps, notes, or poetry harmonize with marks left by blowing leaves or a spray of soil. The mixture is indicative of life, the delightful in harmony with the difficult, one tempering the other. Acrylic and Payne's Gray paints create areas of light and dark. Gold leaf expresses gratitude for "the magic hour," the moment in time when nature's splendor fills all awareness. These paintings and pottery are a material tribute to radiance that lies beneath the external, beauty that would otherwise go unnoticed.

Tiffani's work is shown in galleries internationally, including the Dali Museum. It is included in the collections of Vogue Editor-at-Large Andre Leon

Talley, celebrated designer Diane von Furstenberg, Oprah Winfrey, Savannah College of Art and Design President Paula Wallace, Hilton Savannah Desoto and Memorial Hospital. Tiffani earned a BFA in Painting and a MA in Art History from SCAD. Her work also can be seen at www.tiffaniart.com.

Artist of the Month Plantation Club

Dennis Roth



The Landings Art Association Artist of the Month exhibition for February features the work of accomplished watercolorist Dennis Roth. The monthly exhibition and sale at the Plantation Club Gallery runs from Wednesday, February 3 through Wednesday, March 3, 2010 and also includes works in a variety of media by other Landings Art Association members.

Dennis Roth came to Savannah from Pittsburgh, Pennsylvania after retiring from the first phase

of his life as a consulting structural engineer. The second phase of his life found him cruising the Bahamas and Caribbean aboard his sailboat "Second Wind." The third phase now finds Roth painting in watercolors from Studio Phase 3 - his studio/gallery in City Market, Savannah.

Having always been drawn in his travels to galleries where he could view watercolors, seven years ago Roth determined to "dabble" with the medium himself. Studying with several fine watercolorists, he quickly found his own voice. "I love watercolor paintings. And, I love painting in watercolor." His style is fluid and free and his paintings evolve as a unique partnership connecting artist, paper, water and pigment. Roth goes on to say, "We each have our own special influences and, when all goes well, a beautiful painting appears."

A member of the Landings Art Association, The National Watercolor Society, The American Watercolor Society and The Georgia watercolor Society, Roth's works appear in collections in Savannah, as well in other cities throughout the United States and Europe. Landings Art Association Awards include 1st place Watercolor, Spring Show 2007 and 3rd place Pencil Drawing, Spring Show 2008.

An opening reception, honoring February Artist of the Month Dennis Roth will be held on **Thursday, February 11 from 5-6 pm**. The reception includes a Members' Bar with cheese and fruit buffet courtesy of LAA.

Call for entries for the Spring Art Show!!

LAA 2010 Spring Art Show at Merrill Lynch opening gala reception will be **Thursday, April 15th**. Now is the time to start planning your entry, one per LAA member in the medium of your choice. This is a judged show with prizes, including a "Peoples Choice" award!

All artwork must be presentation ready. Two dimensional work must be properly framed or, if an unframed wrapped canvas is used, the edges must be either painted or covered. All 2D work must be ready to hang with wire as drapery hooks are used to hang framed work on the screens. All work must be for sale.

Artwork delivery day is **Saturday, April 10th, 11am to 1pm**. Artists must sign a waiver, pay a small entry fee, provide necessary information, and pick up tickets for the gala. Artwork pickup day is Friday, April 23rd, 8am to 11am. Plan to invite your patrons and friends to the gala - we want the best turnout ever!

Publicity for this event is already in the works. Artists can help by inviting their clients to the gala or to the show after the gala. Friday, April 16 to Thursday, April 22 (except Sunday), the show is open to the public, 10 am to 4 pm each day.

In addition to preparing a fabulous piece of art for this show, your time and talent are also needed to make this show successful. Please contact Sue Gouse at 667-4378 or gousehouse@hotmail.com to sign up. Everyone who plans to have an entry in the show is asked to

contribute something! There is a job for each one of us! Thank you in advance for your time!

Mary Ellen McLaughlin



A collection of oil paintings by Mary Ellen McLaughlin will be exhibited at Cutters Point Coffee, 7360 Skidaway Road in Sandfly, Monday, Feb. 15 through Saturday, April 3. They are open Monday through Saturday 6:30 am - 6:00 pm. A portion of all sales will be donated to Hospice Savannah.

Note from the President

During my brief time holding the gavel as president of the LAA, there have been a few trends that have caused us to do some soul-searching regarding our organization. First, there has been a fairly dramatic reduction in membership, from a high of nearly 300 two years ago, to 180 members today. Second, we have had serious difficulty recruiting members to serve as volunteers for our various events. Third, resignations and difficulty recruiting for our board had left us down two board members. Fourth, attendance at our monthly meetings has been fairly sparse. For these reasons, we sent invitations (by mail) to attend a special advisory meeting to 35 LAA members who had been active core members of our

organization, the purpose of the meeting was to seek ideas to help re-invigorate our organization.. The meeting was held on January 6 at the Plantation Club. Seven of the 35 invited guests were in attendance in addition to your board.

Key discussion points from this meeting included the following:

- 1) The LAA may have more activities than can be supported by current membership. Survey the membership to determine the kinds of activities desired and to evaluate our current programs.
- 2) Expand the job description of the Vice President of the organization (that position traditionally has had few defined duties in order for this individual to “learn the ropes” and step into the President position.)
- 3) Require those who hang their work and most especially “artists of the month” volunteer their time on one of our committees as way of “giving back” to the organization
- 4) Eliminate formal workshop programs as this program has been sparsely attended and currently has no chairperson.
- 5) Eliminate spring “Art in the Park” as there is currently no chairperson.
- 6) Reduce the number of general meetings from monthly to quarterly.

Your board will be discussing and acting on these suggestions at future board meetings and we will

be fielding a survey this spring to assess the needs and desires of the general membership.

During the January 6 meeting, Penny Thompson agreed to finish the term of the vacated Vice President position and Sue Gouse agreed to chair the Spring Art Show at Merrill Lynch. Many thanks to both Penny and Sue! Sue is currently seeking a co-chairperson to help out with the Spring Art Show as noted elsewhere in the newsletter.

Meanwhile, work continues on our exciting revamped website, so look for an announcement soon, as we roll our new features and a new look for the web.

Don't hesitate to drop me a line at njck@msn.com with any questions or comments regarding this note.

Thanks and Happy Arting!
Carl

Merrill Lynch Gallery

Merrill Lynch changeover will take place on Tuesday, February 2, 3:00-5:00 p.m. Please remember that Merrill Lynch is a very conservative company and tailor the artwork you bring to that end. For more information, contact **Rochelle Frank**, 598-2179.

Landings Co. Exhibits 2010

If you would like to exhibit at The Landings Company for shows lasting two months at a time, please contact **Phyllis Tildes** at artphyll@bellsouth.net or phone 598-9125. She and **Sarah Lucas** are the coordinators for this opportunity. There are easels for up to ten framed pieces. July/August is still available for 2010. Nov/Dec. 2010 will not be

available during the time holiday toys are collected at The Landings Company.) State your medium, and send jpeg attachments of sample art or website info.

Visit our Website
www.landingsart.org

Items for the website should be sent to info@landingsart.org.

Send items to be emailed to the membership to Juli Murray, julsinga@aol.com, 598-7686.

Items for the monthly newsletter go to Joyce Weinzettel, 925-2097, jweinzettel@comcast.net.
Deadline is 20th of each month.

2009-10 Board & Committees

President: Carl Kotheimer
(2196) njck@msn.com
Vice President: Penny Thompson (344-4149)
Secretary: Nancy Dancu (0434)
Treasurer: David Nuttall (0120)
Programs: Tina Austing (0029); Margie Gravina (920-8451)
Membership: Juli Murray (7686)
Newsletter: Joyce Weinzettel (925-2097)
Communication: (LAA Group Email): Juli Murray (7686)
Non-Board Website Consultant: Kate Greene 898-7782
Plantation Club Gallery/Artist of the Month: Martha Hough (7109); Sally Jones (5448); Deborah Dawe (4685); Rochelle Frank (AOM) (2179)
Merrill Lynch Gallery: Rochelle Frank (2179)
Video Library: Grace Rohland (8317)
LAA Workshop Coordinator:
Landings Company Gallery: Phyllis Tildes (9125)