

January 2009 Newsletter

Membership Meeting

**Tuesday, Jan. 20, 2009
7:30 p.m., Skidaway Island
Presbyterian Church**

Betsy Haun

“From Russia with Art”



Betsy Haun

Betsy Haun is a talented, self-taught artist who teaches and serves in the mission field. We think of Betsy primarily as a watercolorist, but she also works in pencil, pen and ink, and oils. Her architect/artist father gave her the encouragement, inspiration and support she needed to develop her talent. She is a member of the Tybee Arts Association and the Savannah Art Association. She served seven years on the SAA board from treasurer to chairman. She instructs drawing and painting classes, lectures, and teaches and attends workshops. She passes her enthusiasm and her love for art to her students, and they are inspired by her yearning to learn new skills and techniques.

Betsy has served in the mission field since 2002. Sponsored by the First Christian Church of Savannah, she served with the

Mission for Biblical Literacy in Russia. After making several trips to Russia to work with short-term mission teams, she taught art to Christian school children in Tambov from September 2007 to April 2008. Betsy will show slides from her trips to Russia and tell us about making art while traveling.

January Artist of the Month



Karin Mead

Karin Mead will be LAA Artist of the Month for January. Her work will hang in the Plantation Gallery January 7 through February 4. For years Karin has been interested in photographing the children of various lands that she has visited.

This exhibition presents the life of children in the extremely poor country of Mali in West Central Africa where she visited in February, 2008. The photographs are intended to convey a sense of how children in various parts of Mali contend with the conditions of daily life, both happy and sad.

Accompanying maps indicate the areas of Mali Karin visited. Mali is a country where old traditions,

Including slavery, still hold sway, sometimes to the detriment of the lives of the children. It is known for mud architecture, both for homes and mosques. Karin hopes this exhibition will encourage interest and understanding for a country that is off the beaten track of tourism.

LAA will host a reception for Karin on Thursday, January 8, 5-6 PM. There will be a complimentary fruit and cheese tray and a member/cash bar. Please come meet this very interesting artist.

Merrill Lynch Atrium Gallery

It's time to get ready for the Merrill Lynch Atrium Gallery. The show will be hung Tuesday, Jan. 6, 3-5 pm, and will be open to the public starting Wednesday Jan. 7. The gallery is open for viewing during working hours (Monday thru Friday 9am-5pm). We'll be asking visitors to vote for their favorite in an attempt to publicize the show. So bring your best. Please reserve your spot with Rochelle Frank 598-2179 or ar_frank@msn.com

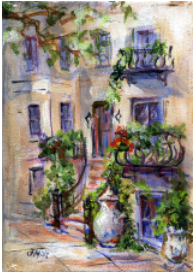
Margaret Brennan

Margaret Brennan will be the featured artist at Horizon Gallery, 206 East Bay Street (Factors Walk) on Friday, January 16 from

5 to 8 p.m. Stop by and see her latest photographic work.

January at the JEA

Vicky Hennie, Frances Mills, Penny Sebrell and Joyce Weinzettel will exhibit their work at the JEA January 1-31, 2009. You are invited to a reception *Sunday, January 11, 3:00 – 5:00 p.m.* at the Jewish Educational Alliance, 5111 Abercorn St., 355-8111.



Frances Mills



Joyce Weinzettel



Penny Sebrell



Vicky Hennie

The Landings Company



Suzanne Croci

During January and February, The Landings Company will display the paintings of **Suzanne Croci**. A graduate of Ohio State University with a M.S. in Nursing, she was a nurse educator. She began painting in acrylic while her husband was an ophthalmology resident. She has studied drawing and painting with

artists in Columbus and Athens, Ohio, St. Petersburg, Sarasota, and Savannah. She received an award in the 2004 spring art show and is currently President of the LAA.

WATERCOLOR WORKSHOP **JOSEPH FETTINGIS** **May 11-13, 2009**

Send in your deposit NOW to hold your place in this workshop. Joseph Fettingis will be doing a 3 day watercolor portraiture workshop on May 11, 12 and 13, 2009, teaching his vibrant use of color to set the mood for the subject of the painting. Go to his web site at www.jfettingis.com and click on Gallery to see an example of his work.



This is not a techniques workshop, but a workshop to help you understand color and values, how to move colors to create balance and movement and design composition and much more. The workshop will be held at the Skidaway Island State Park. Workshop fee is \$225. Send a check payable to "LAA" for \$50.00 to hold your place in this workshop. If you need to cancel, this deposit will be refunded to you. Send to Paulette Cliff, 2 Turtle Lane, Savannah 31411. Questions call Paulette at 598-9409.

Barbara Kellogg



Milkweed Song: acrylic and ink on rice paper, 18-3/4x25-1/4

"Painting in a Series"

Workshop with Barbara Kellogg
Skidaway Island State Park
Building

Mon. Mar 30- Thurs. Apr 2
9-3 each day

Fee: \$300

Coordinator: Sally Clark, 9723

tasclark@aol.com

Barbara Kellogg creates semi-abstract paintings using Lana Watercolor paper, Sekishu rice paper and Holbein Acryla Gouache paint. Line and texture are both important elements in her art and are often inspired by simple gestures in nature such as the turn of a leaf or twist of a branch. Kellogg has been an active artist for over three decades and has developed an extensive resume of exhibitions, awards, publications and teaching experience. Her education includes a B.F.A. in Painting from Syracuse University and three decades of classes with artists Nicholas Reale, Edward Betts and Glenn Bradshaw. Kellogg resides in Fayetteville, NY and is a member of the National Watercolor Society, the CNY Watercolor Society and the Cazenovia Watercolor. Quote from Sally: "I guarantee participants will have a wonderful

four days. . . not necessary to be an abstract artist. She is very good on design and composition. She suggests that we have no oil paint, but acrylic is permitted.”

2009-2010 Artist of the Month

Persons interested in being Artist of the Month at Plantation Gallery in 2009-2010 are to contact Rochelle Frank, 598-2179, ar_frank@msn.com.

Applications must be received between January 1st and March 15th, 2009. The LAA Board will announce its decision after the April board meeting. Application requirements were published in the December 2008 Newsletter.

S.P.A.C.E Gallery

The LAA has been invited to exhibit as a group in the city of Savannah *S.P.A.C.E. Gallery* located at 9 W. Henry St. The exhibit will run from July 7 - August 21, 2009 under the general theme, "Interpretations in Color". Community outreach in the form of teaching a class at the gallery's summer art camp for children will be performed by interested artists. Participating Artists must sign an individual exhibition contract available on the LAA website and submit to any LAA board member by Friday, January 30, 2009.

Rotary Club Seeking Donation of Art

The Annual Rotary Reverse Raffle Charity Benefit will be held at the Plantation Club on March 10, 2009. They are again hoping to receive donations of art for their silent auction. Many members of LAA have been generous in the past. The money raised goes to local, district and

international Rotary projects with special emphasis on charities which include *Bethesda Home for Boys, Safe Shelter, Second Harvest Kid's Café* and numerous projects in our local schools.

Skidaway Rotary greatly appreciates and thanks LAA for its continued support and partnership. You can contact Suzanne Croci, 598-2876, or Tom McGoldrick, 598-7888 (longpoint31410@yahoo.com) with your intentions.

Standing Exhibits in Local Galleries

Chroma Gallery, 31 Barnard
Kate Greene-Gray

Gallery 209, River St.
Shirley Daniell

Gallery 440, 440 Bull
Brenda Turner

Goldeneye Gallery, 5 W York
Karl Kotheimer

Horizon Gallery, 206 E Bay St.
Brenda Turner
Grace Rohland
Margaret Brennan

Jepson Gift Shop
Shirley Daniell

Gallery By The Sea, Highway 80, Tybee Beach
Margaret Brennan

City Market Galleries:

Gallery Nine
Sue Gouse

Gallery Eleven
Carolyne Graham
Carrie Kellogg
Wray Williamson

Studio One
Dottie Farrell

Bess Ramsey

Studio Four
Vicky Hennie
Frances Mills
Joyce Weinzettel

Signature Gallery
Rebecca K. Willis

The Gallery, City Market
Sandra Edgar Davis
Ching Levy
Grace Rohland

We always include in the Newsletter notices we receive of our members' special event shows. Space permitting, we thought it would be good to include members who have more or less permanent exhibits in local galleries. If you have a special or standing exhibit, please email the information to Joyce, jweinzettel@comcast.net.

5488, sally4th@bellsouth.net

LAA Board

President

Suzanne Croci 598-2876
crocis@bellsouth.net

Vice President

Carl Kotheimer 598-2196
njck@msn.com

Secretary

Nancy Dancu 5980434
nancydancu@bellsouth.net

Treasurer

David Nutall 598-0120
anutall@bellsouth.net

Membership

Juliann Murray 598-7686
julsinga@aol.com
Tina Austing 598-0029
ntausting@comcast.net

Program

Gail Wickstrom 598-2273
gail@wickmail.com
Lee Forbes 598-1942
sunshineinga@bellsouth.net

2008-2009 Committees

Website

Kate Greene Gray 598-5446
greenegrays@comcast.net
Ching Levy
chinglevy@comcast.net

Newsletter

Joyce Weinzettel 925-2097
jweinzettel@comcast.net

Plantation Gallery:

Head: Fran Leighton 9334
RFLFSL@bellsouth.net
Hanging: Peter Arrowsmith
9598, pdarrow@bellsouth.net
Sign-In and Labels: Sally Jones

Artist of the Month, Plantation

Gallery: Rochelle Frank, 2179
ar_frank@msn.com

Video and CD Library:

Grace Rohland 598-8217
mammarogra@aol.com

Workshop Coordinator

Paulette Cliff 598-9409

Fall Sidewalk Show

Mimi Diamond 598-0710
Shirley Daniell 598-2194

Merrill Lynch Atrium Gallery

Rochelle Frank 598-2179

SPACE Gallery Proposal

Carl Kotheimer 2196
Kate Greene Gray 5446
Grace Rohland 8217
Suzanne Croci 2876

Landings Company Gallery

Phyllis Tildes 598-9125
Sarah Lucas 598-7203

Spring Art Show

George Staimer 598-7297
**** Thursday, April 30, 2009****

Spring Art in the Park

Paulette Cliff 598-9409

Plein Aire Painting

Charmaine West 598-0787
Karen Macek 598-0097

Nominating Committee:

Dave Ryden, 598-8614,
Gail Quinn, 598-5776
Margie Gravina, 920-8451