

# November 2009 Newsletter

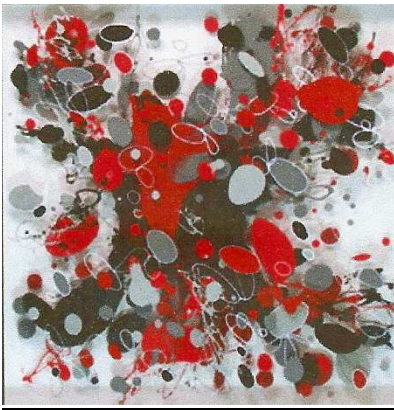
**Next Meeting:**  
**Tuesday, Nov. 15, 2009**

**6:30 p.m. B.Y.O.S.**

Bring your own sandwich and join us at 6:30 p.m. prior to meeting. We want old and new members to get to know each other. Pop and chips and cookies will be provided. Please join us. Opportunity to view art videos is available also.

**7:30 p.m. Meeting**  
**Skidaway Island**  
**Presbyterian Church**

**Wyatt C. Graff**



**Wyatt Graff** says his artwork explores Modernism in a Post-Modern age. With an eye cast on the traditional concerns of both painting and sculpture, he created object-based environments, influenced by Modernist principles. These principles brought forward in time, focus on the relationship between wall, paint and support to create a Post Modern fusion of sculpture and painting. The end result is neither

but rather a new way of investigating both disciplines.

Wyatt currently resides in Savannah. He received his MFA in painting from SCAD in 2006. He recently completed a large piece for Atlanta's High Museum Restaurant, Table 1820, along with a painting for the Marriott Hotel in San Antonio, TX. His work can be viewed at [www.krausegallery.com](http://www.krausegallery.com) and [www.chromaartgallery.com](http://www.chromaartgallery.com).

**The Landings Art Association**  
**Artist of the Month**

**Rochelle Frank**

**November 2009**

**Opening Reception:**

**Thursday, Nov. 12, 5:00-6:00**

This monthly exhibition, which also includes works by other LAA members, will be on view in the Plantation Club Gallery at The Landings Wednesday, Nov. 4 through Wednesday, Dec. 2.

**Rochelle Frank** came to Savannah in 2001 from Little Rock, Arkansas where she was employed by Dillard's as Production Manager of their Corporate Advertising Department. This culminated a career in the graphic arts industry which followed upon her degree in fine arts from the City College of New York. Here in Savannah, Rochelle has had the opportunity to concentrate on her painting and



photography. This exhibition will be highlighted by works in oils, digital photography, acrylics and mixed media. You will see that she is inspired by our marshes and Low Country scenes and the moods portrayed in her art are particularly influenced by the colors of the sky. As she says, "I make the sky spectacular, and the rest follows." Born in Germany, Rochelle has lived abroad as well as several cities in the US. This diversity of experiences has provided Rochelle with lasting impressions expressed through her art.

The recipient of numerous awards and recognition, Rochelle has found a national and international following through her website, [www.rochellefrank.com](http://www.rochellefrank.com), where she is able to creatively combine her marketing and graphic skills with her art. In addition to recognizing her artistic talents, the Landings Art Association is grateful for Rochelle's commitment to community arts organizations. Having been instrumental in establishing the Chester (NJ) Art Association, she continues to demonstrate a desire to support and promote artists and the arts through active

involvement here. Her leadership has resulted in the monthly exhibitions at the Merrill Lynch Atrium Gallery on Skidaway Island, as well as her enthusiastic participation in numerous other Association activities.

The opening reception is Thursday, November 12, from 5-6 PM, at the Plantation Club Gallery. Cash bar with a cheese and fruit buffet compliments of the Landings Art Association.

**Merrill Lynch Gallery**  
**Fall Show – October 2009**



As the holidays approach, our calendars quickly fill up. The end of summer means the Fall Show at Merrill Lynch. There was a flurry of activities to get this show going since the start was delayed. Screens were brought in from storage with a truck and then set up hiding the walls and windows, covered with fabric, and then attached to each other for support. Artists brought in their works and signed in. There were lots of “oohs” and “aaahs” of admiration. The works were hung, re-hung and moved to make certain everything was in the right spot. And then the opening reception came. Everything was perfect. The Bouchillon and Ham Group of Merrill Lynch put out a lovely spread of heavy hors d’oeuvres, cheese, fruit and wine and everyone attending got to vote for their favorite artwork. This is a

unique and very coveted award by our artists since so many in our community get to vote. In past years we’ve had hundreds of individuals vote to pick the “People’s Choice Award” recipient. And this year the winner was *Skye Tarr* with her oil painting titled “Twenty.” From Gail Molzahn and Rochelle Frank who organized the show: “Our thanks to ALL the volunteers who gave their time and effort to make this happen. We could not have done it without all of you.”

**Merrill Lynch Gallery**  
**Monthly Show, November 2009**

The November monthly show will be hung *Tuesday, November 3, 3:00-5:00 p.m.* Works hanging since the Fall Show will be removed. The Atrium Gallery can hold oversized artwork, 3-dimensional works and jewelry. For more info, call Rochelle Frank, 598-2179.

**The Landings Co. Gallery**  
**Sue Gouse**  
**November – December**



Born in Memphis, Sue *Gouse* has moved frequently throughout the United States, has also lived in Mexico, and finally settled in Savannah. Much of her inspiration for her oil paintings comes from her travels, with special emphasis on the beach and the mountains. Sue believes life is a gift from God, and her palette

reflects her love of beauty in vivid color. She enjoyed a long career in clinical nursing after graduating from Duke University. She is married to Dr. John Gouse, has raised five children, and is the proud grandmother of four.

After much creative work of all kinds, especially in home decorating, gardening, and sewing, Sue became an oil painter, studying under Velda Lovell in Cashiers, NC. She has taken instruction from Marcos Blahove of Tybee Island, GA, Paul Lucchasi of New York City, and Bob Rohm of Flower Mound, TX, Joann Williams-Walker of Panama City, FL, and Julie Hanson of Sarasota, FL.

**Landings Co. Exhibits 2010**

If you would like to exhibit at The Landings Company for shows lasting two months at a time, please contact *Phyllis Tildes* at [artphyll@bellsouth.net](mailto:artphyll@bellsouth.net) or phone 598-9125. She and *Sarah Lucas* are the coordinators for this opportunity. There are easels for up to ten framed pieces. State which two month period you prefer, your medium, and send jpeg attachments of sample art or website info.

***Dues are Due!***

**The application form can be downloaded from the website. Pay your dues and support the Landings Art Association! Contact Juli Murray, membership chair, at 598-7686.**

**November at the J.E.A.**

Three members of LAA will exhibit their work at the Jewish Educational Alliance in November. *Suzanne Croci,*

*Sanford Murck* and *Charmaine West* will display their paintings from November 1st to November 30th. *There will be an opening reception from 5:30 to 7:30 on Sunday, November 8th.* Everyone is welcome. There is no charge. The JEA is located at 5111 Abercorn Street just north of Derenne.

**Isle of Hope Artisans**  
**9<sup>th</sup> Annual Art Show & Sale**  
**Sat., Nov. 14, 10:00 -4:00**  
**Isle of Hope Marina Pavilion**

Twenty-one artists will show their work which includes pottery, sculpture, embroidery, oil paintings, watercolors, pen and ink drawings, photography, stained glass, wood art, jewelry and quilted purses. Cutters Point will provide refreshments and also have a preview of the art show at the coffee shop in Sandfly, Oct. 31-Nov. 12.

**Plantation Gallery**

Drop off and pick up is first Wednesday of the month. Next change over day is **Wed., Nov. 4.** For more information, call Martha Hough (7109), Sally Jones (5448), or Deborah Dawe (4685).

Please bring just one piece of art to Plantation. Each piece gets better attention when artwork has more space to breathe. Thanks!

**Hospice House**

*Gail Molzahn* will sell jewelry during the *Vicci Waits* reception at Hospice House, Thursday, Nov. 19, 5:30-7:00 p.m. A member of LAA, Gail's modern, wearable art features turquoise, amber, pearls and beads. A portion of proceeds benefit Hospital Savannah. Vicci's

show, "Passaggio," will be on display November and December.

**Originals vs. Reproductions**

Having received several emails from individuals who believed only original paintings should be allowed at LAA events and shows, the President of the Association asked for a discussion of "Originals vs. Reproductions" at the Oct. 20 LAA general meeting. The Board recommended that all art, whether original or reproduction, be accepted at all LAA display opportunities, provided reproductions were accurately labeled as such. Discussion followed. Some favored an "originals only" policy, particularly for our judged show (Spring Art at Merrill Lynch). Further discussion found opinions on both sides of the matter, with consensus that the judged show should be "originals only" for painters. Motion made and seconded that all art, whether original or reproduction, will be accepted at LAA events and shows, provided reproductions are properly labeled as such, *with the exception of the Merrill-Lynch judged spring show, which must be originals for painters.* Vote was unanimous.

**LAA Holiday Party**  
**Friday, December 4**  
**Plantation Ballroom**  
**6:30 – 9:00 p.m.**

The reservation form is attached to the newsletter. Make your reservation by November 23. Any questions, call Karen Macek at 598-0087 or Paige Word at 598-0189.

**Visit our Website**  
**[www.landingsart.org](http://www.landingsart.org)**

Items for the website should be sent to **[info@landingsart.org](mailto:info@landingsart.org)**.

Send items to be emailed to the membership to Juli Murray, **[julsinga@aol.com](mailto:julsinga@aol.com)**, 598-7686.

Items for the monthly newsletter go to Joyce Weinzettel, 925-2097, **[jweinzettel@comcast.net](mailto:jweinzettel@comcast.net)**.  
**Deadline is 20<sup>th</sup> of each month.**

**2009-10 Board & Committees**

**President:** Carl Kotheimer  
(2196) **[njck@msn.com](mailto:njck@msn.com)**

**Vice President:** Paulette Cliff  
(9409)

**Secretary:** Nancy Dancu (0434)

**Treasurer:** David Nuttall (0120)

**Programs:** Tina Austing (0029);  
Margie Gravina (920-8451)

**Membership:** Juli Murray  
(7686)

**Newsletter:** Joyce Weinzettel  
(925-2097)

**Communication:** (LAA Group  
Email): Juli Murray (7686)

**Non-Board Website Consultant:**  
Kate Greene 898-7782

**Plantation Club Gallery/Artist  
of the Month:** Martha Hough  
(7109); Sally Jones (5448);

Deborah Dawe (4685); Rochelle  
Frank (AOM) (2179)

**Merrill Lynch Gallery:** Rochelle  
Frank (2179)

**Holiday Party:** Karen Macek  
(0087) and Paige Word (0189).

**Video Library:** Grace Rohland  
(8317)

**LAA Workshop Coordinator:**  
Paulette Cliff (9409)

**Landings Company Gallery:**  
Phyllis Tildes (9125)

**Open: Spring Art Show, Spring  
Art in the Park, and Publicity.**