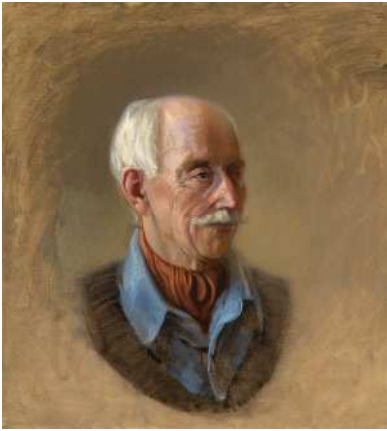


November 2008 Newsletter

November Membership Meeting

**Tuesday, Nov. 18, 2008
at 7:30 P.M., Skidaway Island
Presbyterian Church**



Oil Portrait of Cedric Stratton

James Langley, SCAD Professor of Painting and Drawing, will be the speaker. A seasoned artist and designer, James Langley counts among his recent projects decorative architectural painting in collaboration with Thomas Gordon Smith Architects at the Metropolitan Museum of Art. Civic and ecclesiastical projects include renderings for a 9/11 memorial in Lower Manhattan, decorative painting design for the Cleveland Public Theater, an inlaid marble pattern for historic St Ann's church in Cleveland Heights, and an altar triptych for the Opus Dei Headquarters in New York City. His paintings in private and corporate collections have been acknowledged by the American Watercolor Society, the Institute of Classical Architecture and the National Civic Art Society.

Bylaws Change

LAA Bylaws reveal that the Officers of the Board consist of Pres., Vice Pres., Sec., Treas., Program Chair and Membership Chair. At our recent board meeting, we recommended expanding the officers to include a Communications Chair. That person would be Web Site Director, and/or Newsletter Editor, and/or Publicity Chair.

You can refer to the current bylaws at www.landingsart.org. We will vote on the bylaws change at the November meeting.

Artists of the Month

November 2008

Plantation Gallery

**Opening Reception: 5:00-6:00
Thursday, November 13**

Eva J. Bulman and *Sanford C. Murck* will be the featured artists in the Plantation Gallery for the month of November. Their Art will be installed on Wednesday, November 5 with an opening reception planned for Thursday, November 13, 5-6 PM.



Eva was born in Vienna, Austria, but immigrated to the United States as a child. Living in New

York, San Francisco and Montreal proved nourishing atmospheres that encouraged her appreciation for music and art. She and her husband raised two daughters in Connecticut. They moved to The Landings in 1994.

Eva's mother was an excellent amateur photographer who, in the 1940's, developed her own pictures shot only with Rolleiflex cameras. Eva's first camera was a 35mm Zeiss Contaflex which she purchased during college and continued to use until a few years ago when she purchased the Canon Power Shot S21S. That gave out this summer. She is now using a Nikon Coolpix p80. She is reluctant to use the computer to crop or alter lighting. She tries "to capture the beauty of the object and let the image speak for itself." She is drawn to reflected light on architecture, the majesty of nature or the beauty of a single bloom. Her photography brings Eva tremendous pleasure and satisfaction and has resulted in numerous awards including 1st Place in the juried 2008 LAA Spring Art Show for "Shadow Play".



Sandy retired to Savannah in 1991 after a career in sales and marketing. Although he had no experience in art, he had inherited an easel, oil paints and a few canvases. He decided to give it a try and has been painting ever since. From the beginning, he has enjoyed painting flowers of all kinds. They appeal to him in many ways. "Even a white flower has so much color and the simplest bud has so much detail." He has painted so many flowers by themselves, in bunches, arranged in vases and floating in bowls. He also enjoys painting shells, birds, landscapes, still lifes And even portraits, but returns to paint flowers whenever he wants to relax. Sandy started painting in oil, tried watercolors, and now works solely in acrylics. "They have the advantages of both oil and watercolor" he says, "They're so much easier, unlimited color selection, dry fast and clean up with water! All new artists should try acrylics. And if they're looking for something to paint, look in their own backyard garden."

Please join Eva and Sandy at a reception in Plantation Gallery Thursday, November 13, 5-6PM

Merrill Lynch Atrium Gallery

The Merrill Lynch show in their "Atrium Gallery" has been a great success and ML would like us to continue on a monthly basis. If you'd like to participate in the next monthly show, please send an email to *Rochelle Frank* at ar_frank@msn.com with LAA in the subject line or call 598-2179. Please indicate medium and size. Since space is limited, it will be on a first received email (or phone call), first served basis.

However, if you participated in the Aug-Sept show, you will be second to those who have not participated. We will be hanging art on **Tues. Nov 4th, 3 – 5 pm.**

People's Choice Awards Merrill Lynch Gallery

The winner of the Fall People's Choice was Marilyn Foley's "*Hopper's Lighthouse*". There was an extremely close tie for second between Irene Mayo's "*Skidaway Sunset*", Dave Ryden's "*Romeo*" and Skye Tarr's "*Between the Palms*".

From President Suzanne Croci: "On behalf of LAA, I would like to thank Lind Hollingsworth and Sid Daniell and the many members who helped them to make the Merrill Lynch Fall show a wonderful experience. There were 80 works of art that were amazing. The LAA is so appreciative of the Merrill Lynch group for hosting this super event."

Sally Clark November-December Hospice House Art Gallery 1352 Eisenhower Drive



Colorful and contemporary water media and collage by local

abstract artist, *Sally Clark*, will hang through the end of the year at the Hospice House Art Gallery, 1352 Eisenhower Drive. Born in Central New York, Sally graduated from Middlebury College with a BA in Fine Arts in 1956. She served as a docent at the Munson-Williams-Proctor Arts Museum in Utica, NY for 30 years before moving to Savannah. She is a member of the Landings Art Association and the Central NY Watercolor Society.

You are invited to an opening reception for Sally's exhibition at the Hospice Savannah Art Gallery, Thursday, November 13, 2008, 5:30-7:30. The exhibit is free and open to the public November and December.

Margaret Brennan

Margaret was juried in to the 2008 Telfair Air Fair. It is the 14th Annual, and it will showcase the work of over 85 artists from the Savannah area and across the nation, with an Arty Party Friday night. The show will be held on Saturday and Sunday, November 8 and 9.

Margaret also won the Photography Award at the Tybee Festival of the Arts sponsored by the City of Tybee Island and the Tybee Arts Association. The festival was held at the Parker Pavilion October 18-19. The judge found Margaret's work to have a "*dynamic use of light and composition. Poetic.*"

Aside from photography there was painting, mixed media, baskets, jewelry, glass, metal, furniture, and ceramic, and the artists came from Georgia, South

and North Carolina, Florida, Indiana, and Missouri.

S.P.A.C.E Gallery

The LAA has been invited to exhibit as a group in the city of Savannah *S.P.A.C.E. Gallery* located at 9 W. Henry St. The exhibit will run from July 7 - August 21, 2009 under the general theme, "Interpretations in Color". Community outreach in the form of teaching a class at the gallery's summer art camp for children will be performed by interested artists. Participating artists must sign an individual exhibition contract available on the LAA website and submit to any LAA board member by Friday, January 30, 2009. Details to follow.

Book Cover by Sue Gouse



Sue Gouse's original oil painting, "Red Chairs," has been selected for the cover of a new book, "Two, Please," by Kyle J. Roberts and Beverly Plimpton of the Foundation for Redeemed Living, LLC, Tampa, Florida. The book will be published within the next few months, and will be available through the foundation, Barnes

and Noble, Amazon, and other well known book outlets.

In addition, one of Sue's paintings, "Oats of the Sea" has been juried into the 2008 Juried Exhibition at The Bascom in Highlands, North Carolina. The show opens October 11, 2008.

Gifts of Art

In December, Plantation Gallery will be filled with Art to be purchased with 10% of proceeds donated to a charity selected by the buyer. Works purchased will be replaced with a "SNOW FLAKE" noting that charity.

Change over day in Plantation Gallery will be on Tuesday, Dec. 2, 10-12, one day early so these "Gifts of Art" will be in place for our Holiday Celebration on Tuesday evening. We're hoping all artists will respond with art to fill both Plantation walls and buyers will respond benefiting the charities we love.

LAA Holiday Party "Bearing Gifts of Art" RSVP Deadline by Nov. 24th

Come enjoy Mike Miller playing the piano for our pleasure, fantastic food, and the premier of the "Gifts of Art Show" exhibited in the Plantation Club gallery. After dining, stay and join around the piano for a sing along. You won't want to miss this event! Fill out your reservation now! (See flier insert for more information.)

The Landlovers Boutique Saturday, November 8 Plantation Club 9:30 am – 2:00 pm

Again this year, the Landings Art Association will participate with three tables that can accommodate

up to ten people. The cost is \$20 per person. You can exhibit and sell your notecards, jewelry, photographs, prints and paintings. This is a very well attended show with many avid pre-holiday buyers.

Call *Sanford or Dryden Murck* to reserve your space (598-7404). First come, first served.

Would You Like to Help A Center City School?

Notre Dame Academy (on Bull St. next to Sacred Heart Church) has limited funds; therefore, they do not have an art teacher for this year. Would you help with some art projects for the 5th thru 8th grades? If you can help once a month or once a year, it would be greatly appreciated by the students and staff. THANK YOU. Call: Tina Austing (598-0029)

2009-2010 Artist of the Month

Persons interested in being Artist of the Month at Plantation Gallery in 2009-2010 are to contact Rochelle Frank, ar_frank@msn.com, 598-2179, or Carrie Kellogg, 598-4372, edandcarrie@bellsouth.net.

Applications must be received between January 1st and March 15th, 2009. The LAA Board will announce its decision after the April board meeting.

Application Requirements:

1. Biography of 200-300 words.
2. Two digitals of artist's work, 5"x7" with resolution of 300 dpi.
3. Coordinators will assist artists with issues relating to digital images if necessary.
4. Member of LAA for at least one year.

5. Have not exhibited at Plantation for over two years.
6. Adequate number of artworks properly framed.
7. Precedence given to those who have never been AOM.
8. Artists encouraged to exhibit in twos or threes if applications exceed space.
9. All regulations about hanging on the member wall apply to AOM except size and delivery times. These will be agreed upon with Fran Leighton, chairperson.

LAA Board

President

Suzanne Croci 598-2876
crocis@bellsouth.net

Vice President

Carl Kotheimer 598-2196
njck@msn.com

Secretary

Nancy Dancu 5980434
nancydancu@bellsouth.net

Treasurer

David Nutall 598-0120
anutall@bellsouth.net

Membership

Juliann Murray 5987686
julsinga@aol.com
Tina Austing 598-0029
ntausting@comcast.net

Program

Gail Wickstrom 598-2273
gail@wickmail.com
Lee Forbes 598-1942
sunshineinga@bellsouth.net

2008-2009 Committees

Website

Kate Greene Gray 598-5446
greenegrav@comcast.net

Newsletter

Joyce Weinzettel 925-2097
jweinzettel@comcast.net

Plantation Gallery:

Head: Fran Leighton 9334
RFLFSL@bellsouth.net
Hanging: Peter Arrowsmith
9598, pdarrow@bellsouth.net
Sign-In and Labels: Sally Jones
5488, sally4th@bellsouth.net

Video and CD Library:

Grace Rohland 598-8217
mammarogra@aol.com

Workshop Coordinator

Paulette Cliff 598-9409

Fall Merrill Lynch Show

Lind Hollingsworth 925-5065
Sid Daniell 598-2194

**** Thursday, Oct. 2 reception ****

Fall Sidewalk Show

Mimi Diamond 598-0710
Shirley Daniell 598-2194

Merrill Lynch Atrium Gallery

Rochelle Frank 598-2179

SPACE Gallery Proposal

Carl Kotheimer 2196
Kate Greene Gray 5446
Grace Rohland 8217
Suzanne Croci 2876

Landings Company Gallery

Phyllis Tildes 598-9125
Sarah Lucas 598-7203

Landlovers Boutique

Sandy & Dryden Murck, 7404
**** Sat., Nov. 8 ****

Christmas Party

Allan & Karen Boyce 9363
Dennis & Sandy Shippy 5391
Amy Trestman 8855
**** Tuesday, Dec. 2 ****

Spring Art Show

George Staimer 598-7297
**** Thursday, April 30, 2009****

Spring Art in the Park

Paulette Cliff 598-9409

Plein Aire Painting

Charmaine West 598-0787
Karen Macek 598-0097