

# February Newsletter 2008

## February Membership Meeting

Tuesday, February 19, 2008  
at 7:30 P.M., Skidaway Island  
Presbyterian Church

### **Vicci Waits Guest Speaker**

One of Savannah's premier artists, **Vicci Waits** has quickly established a solid reputation among art connoisseurs and new collectors. Regardless of what subject she chooses to paint, Waits has proven to possess an unusually keen eye for capturing bold, vibrant colors. It is her attention to colors and the way the sun reacts in the shadows of the expansive marshes, floral fields, and architectural details that have made her paintings so recognizable to the public.



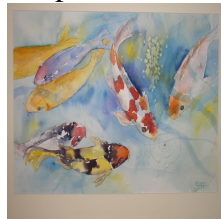
A Florida native, Vicci has always been interested in the arts. Her mother was a painter, so Vicci was exposed to the art her entire life. She studied with Ballet Arts in Palm Beach for many years, while attending college in South Florida. After starting a family and moving to Georgia in 1992, Vicci decided to focus back on her interest in art. She began attending SCAD where she expanded her knowledge of art history and the old masters. Vicci quickly became very serious about her painting. "It is as if a part of me was missing for

many years," Vicci recalls. When this newfound love of painting and some positive personal changes occurred in her life, Vicci's work took on a new happier appearance. She started using more vibrant colors, combined with bold strokes, and an impasto technique, making her paintings unique in style. Vicci then decided to pursue a professional career with her painting. She opened Raffine Galerie in 2000. Her paintings hang in several inns, and corporate offices, along with many private homes. Waits plans on opening a second gallery location in Key West, Florida.

### ARTISTS OF THE MONTH

Please join us for the opening reception on **Thursday, February 7<sup>th</sup> from 5-6 p.m.** There will be a fruit and cheese platter and a cash and member bar. Two watercolorists – Paulette Cliff and Carolyn Wall will be featured in the Plantation Club Gallery for the month of February.

Paulette began her pursuit of art more recently. She enjoyed a career in business but always admired the beauty of transparent watercolors. She wanted to paint.



In 2000, she took a class at AASU and has been on a fast track ever since adding classes in drawing

and seeking workshop opportunities with many accomplished artists. Practice is important to Paulette and she pursues this with the aid of books and books and videos. This dedication is being rewarded. Her painting "Savannah Holly" was selected to be one of the Landlovers holiday cards for 2006.

Carolyn recalls painting with her kindergarten friends in a small town near Augusta. Serious study began at the Gertrude Herbert Art Institute and continued at the University of South Carolina where she received her degree in Education with a minor in Art. Life as the spouse of a Presbyterian minister required numerous relocations. She has taught and exhibited for three decades. Since moving to the Skidaway in 2003, she has continued to paint and teach.



### SPRING ART SHOW

The 21st annual Spring Art Show Gala will be Thursday, May 1st at the Merrill Lynch Building in the Village. Artwork is to be dropped off on Monday, April 28th and the show will open to the public on Friday, May 2nd and run through Friday, May 9th. We are very excited that the judge will be Holly Koons McCullough, Chief

Curator at the Telfair Museum of Art.

The LAA Board and Spring Art Show committee have mutually agreed to display a surprise poster rather than having a competition. There will be no poster contest this year. Chairpersons for the Spring Art Show are Dave Ryden (598-8614), Margaret Brennan (598-4489) and Sandra Edgar Davis (598-5479). There will be more information about the art show in the LAA Newsletter each month but if you have any questions, please feel free to call any of the above-mentioned chairpeople.

**BETH LOGAN AT  
CUTTER'S POINT  
COFFEE SHOP**



New LAA member Beth Logan will display her paintings at Cutter's Point Coffee shop, in Sandfly, during the month of February. Cutter's Point Coffee is open Monday through Saturday and in Beth's opinion, has the best cheese Danish on the planet. Beth will donate 25% of her sales to the charity of the buyer's choice.

**LANDLOVERS HOLIDAY  
CARD COMPETITION**

Each year, Landlovers uses the proceeds from the sale of its holiday cards to finance Skidaway Island projects. The following are guidelines for the artwork which must be submitted by June 30<sup>th</sup>. Please be advised that **the original artwork becomes the**

**property of Landlovers and are used as the prize in an art raffle.** There is no monetary remuneration.

1. All mediums including photography will be accepted.
  2. Selection of the art to be used for the 2008 Christmas cards will be in July.
  3. Do not submit artwork that is framed.
- NO FRAME & NO GLASS!**
4. The artwork must be two (2) dimensional, either horizontal or vertical.
  5. Size 8"x11" preferred but no larger than 11"x17".
  6. Image should be reducible to 4"x 6" card size.
  7. Image should reflect the uniqueness of the Landings with a holiday theme but with **NO** religious symbols.

If you have any questions, please contact Tina Austing, Chairman, 7 Windless Court, 598-0029, or [ntausting@comcast.net](mailto:ntausting@comcast.net).

**GREG BARNES  
PASTEL WORKSHOP**

Greg Barnes received his BFA in 1985 from Wake Forest, followed by a career in illustration, computer graphics and multimedia programming. After 9/11 he and his wife decided to pursue their full time careers in fine art. They both work out of their home-based studios in Charlotte, NC. He is locally represented at the Chroma Art Gallery in Savannah. Greg exhibited in the Telfair Art Show this past November.

The LAA has arranged for Greg to give a 3 day PASTEL WORKSHOP here this fall. The cost for the workshop will be \$225. It will be part plein aire and part indoor painting. We will

have a meeting room reserved in case of bad weather and for indoor painting and instruction. Go to Greg's website at [www.BarnesStudios.com](http://www.BarnesStudios.com) to see his style of beautiful pastel painting.

Dates still are not determined, but it may be in October. The class size will be 10-14 pp. **Anyone interested in taking this Pastel Workshop should call me at 598-9409 ASAP** to get their name on the "waiting list." When we have the dates confirmed, then I will request a deposit to hold your place in this pastel workshop class. Paulette Cliff

**The LAA**

is looking for more **volunteers** to get involved on committees. Share your talents with colleagues. Please contact a Board member with your interest.

**PLEIN AIRE PAINTERS**

If you would like to be part of the **LAA Plein Aire** painting group, which meets at various sites on Skidaway Island and beyond, one or two times a month, please contact **Paulette Cliff at 598-9409 - Everyone is welcome!**

**UPCOMING EVENTS**

**Tom Jones  
Watercolor Landscape  
Workshop**

April 14 – 17, 2008

Don't miss the opportunity to learn to paint looser and juicier landscape paintings with bold accents. Tom focuses his workshop on teaching artists how to paint vibrant landscapes. He is an excellent instructor. This 4 day class will meet at Skidaway

Island State Park, with some outdoor (weather permitting) and indoor instruction in a large, well lit room. Tom will also do a demonstration painting at our April meeting of a location at The Landings and donate this painting to the LAA. This workshop is now half filled, so reserve your spot now. We will have a waiting list, so if it is necessary for you to cancel, your deposit will be returned. This workshop will be advertised to the Savannah artists.

Workshop fee is \$300. Reserve your place by sending a check for \$50, payable to LAA, to Paulette Cliff, 2 Turtle Lane, Savannah, GA 31411. To view Tom Jones's style of work, go on his web site [www.tomjonesartist.com](http://www.tomjonesartist.com).

**ATTENTION:**  
**PLANTATION DISPLAY**  
To hang your art in the monthly members' display at the Plantation Gallery, bring all ready-to-hang artwork on **the 1<sup>st</sup> Wednesday of the month between 10:00 and noon**. For more information, contact Fran Leighton, Chair, 598-9334.

The December newsletter contained an insert with application requirements for "**Artist of the Month**". Persons interested in applying need to contact Rochelle Frank 598-2179 [rsfrank@bellsouth.net](mailto:rsfrank@bellsouth.net) or Carrie Kellogg 598-4372 [edandcarrie@bellsouth.net](mailto:edandcarrie@bellsouth.net). All applications must be received between January 1<sup>st</sup> and March 15<sup>th</sup>, 2008. The LAA Board will announce its decision after the April Board meeting.

### **Our WEBSITE**

[www.landingsart.org](http://www.landingsart.org)

**Our Virtual Gallery is Open to the Public** and it is open 24/7 to all viewers around the globe! Visit the website regularly to view our member "Artist Galleries" and for all your Association needs and much, much, more. For more information, call Grace Rohland at 598-8217.

### **LAA** **NEWSLETTER**

Please contact Jane Alpert at [janemagic@aol.com](mailto:janemagic@aol.com) or call her at 598-8287. **Deadline for getting articles into the newsletter is before the 20<sup>th</sup> of the month.**

### **NEW AT** **GALLERY 209**

Carrie Kellogg was juried into Gallery 209 on River Street as of January 1, 2008. Congratulations, Carrie.

### **TED SCYPENSKI** **AT "THE GALLERY"**

Well-known local artist **Ted Scypenski** is the featured artist for February and March at **The Gallery**, located downtown in the center court of City Market. Ted's self-developed style is executed in watercolor or oil mediums and it depicts Ted's unique views of Savannah's people and places. His distinctive approach to his art has won him many devoted collectors around the world.

Look for Ted's work in **The Gallery** or at **Hospice** for a show in March where he and Phil Stark, also of The Gallery, will be showing new works.

### **WEDNESDAY FIGURE** **DRAWING GROUP**

offers artists in the community an opportunity to meet other artists and to work from a live model each week. The group is open to artists with some experience and no instruction is offered. The group meets Wednesday from 9 - 12 noon at the Savannah Actor's Theatre on Louisville Road. Cost is \$60 monthly \$20 per session for drop-ins. Advance registration required. And, a

### **FEBRUARY WORKSHOP** **DRAWING THE HUMAN** **FIGURE with** **JEFF MARKOWSKY**

Jeff is a professor at the Savannah College of Art and Design and a working artist. He spent a month last summer studying in Florence, Italy and will share some of his new learning during this workshop. We will have a live model both days. The workshop will be February 29<sup>th</sup> and March 1<sup>st</sup> from 9 am to 4 pm at the Savannah Actor's Theatre on Louisville Road. Cost is \$185 for the 2 day workshop. Advance registration required. For additional information on either of these workshops, contact Judy Mooney at 912 443 9313 or email [judy.mooney@bellsouth.net](mailto:judy.mooney@bellsouth.net)

### **EMAIL ADDRESS** **UPDATE**

We are concerned that some members are not receiving emails. In an effort to update our email list, please send an email to Juli Murray at [julsinga@aol.com](mailto:julsinga@aol.com) if you have not received an email from the LAA in the past month.

## **LAA BOARD**

### **President**

Suzanne Croci 598-2876

### **Vice-President**

Sally Clark 598-9723

### **Secretary**

Carolyn Wall 598-2031

### **Treasurer**

Joni Arb 598-8266

### **Membership**

Tina Austing 598-0029

Juli Murray 598-7686

### **Programs**

Paulette Cliff 598-9404

Penny Sebrell 598-8262

## **2007-2008 LAA Committee**

### **Newsletter**

Jane Alpert – 598-8287

### **Website**

Lenell Dufour – 598-7485

### **Artist of the Month and Plantation Gallery**

Fran Leighton, Chair – 598-9334

Sally Jones – 598-5488

Rochelle Frank – 598-2149

Carrie Kellogg – 5984372

### **Spring Art Show**

Dave Ryden 598-5479

Margaret Brennan 598-4489

Sandra Davis 598-Spring

### **Sidewalk Art Sale**

Barbie Townsend 598-7387

### **Workshop Coordinator**

Paulette Cliff 598-9409

### **Nominating**

Sally Clark 598-9723

Barbara Lucas 598-0626

Suzanne Croci 598-2876

Gail Quinn 598-3776

### **Video Library**

Grace Rohland 598-8217





