
Landings Association

November 2011 Newsletter

General Membership Meeting

Tuesday, November 15, 2011: 6:00 p.m. B.Y.O.S.

Bring your own sandwich and join us at 6:00 p.m. prior to meeting. We want old and new members to get to know each other. Pop and chips and cookies will be provided. Please join us. Opportunity to view art videos is also available.

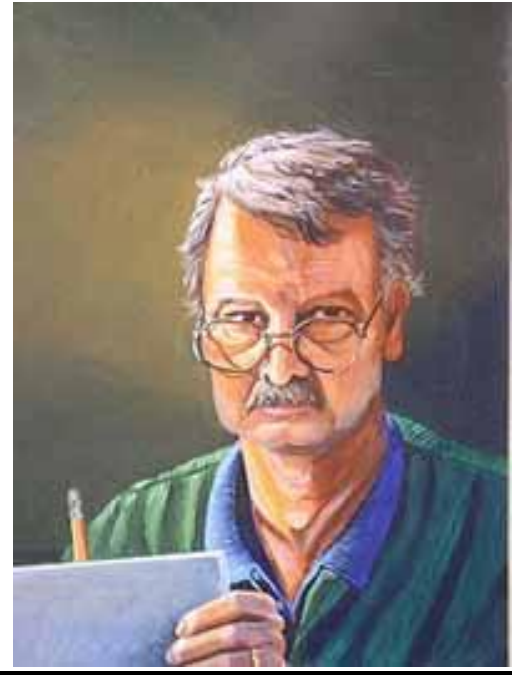
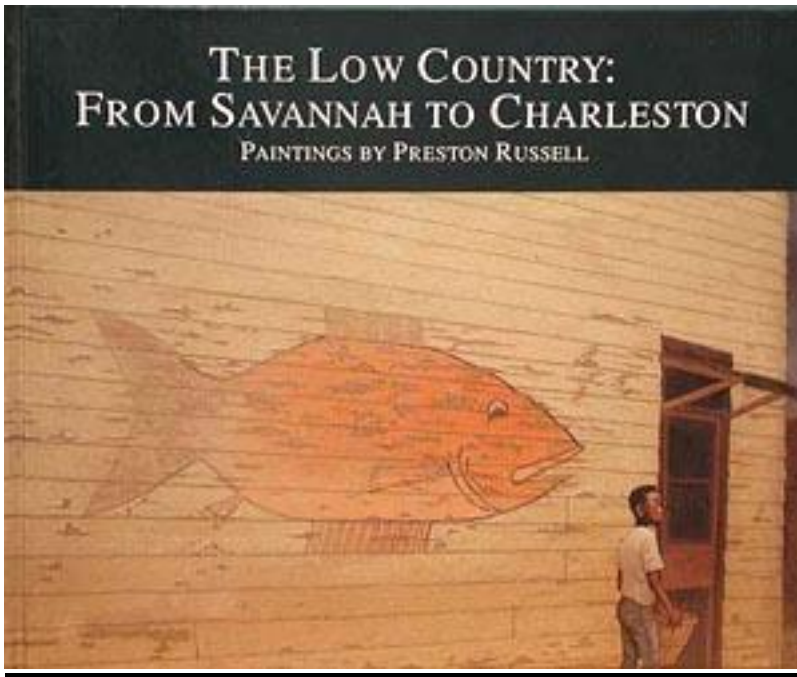
7:00 p.m. Meeting, Skidaway Island Presbyterian Church

Program: Preston Russell, Professional Artist



Preston Russell has been a painter, writer, and historian in Savannah for over thirty years; he was a founding member of Gallery 209 in the 1970's. In 1976, the French government chose three of Preston's works for the American Artists in Paris exhibit, part of France's cultural salute to the American Bicentennial. His works are in homes throughout the nation, as well as southern museums. His recently published book, *The Low Country: From Savannah to Charleston*, is available, displaying eighty-five paintings which capture the mystique of this region.

You can see more of Preston's work at www.prestonrussell.com. Below are a self portrait and the cover of his book of his paintings of the Low Country.



October Artist of the Month, Plantation Club

Penny Day Thompson

Reception: Sunday, November 13, 5:00 – 6:30 p.m., Plantation Club



In November, LAA Co-President **Penny Day Thompson** returns to the Plantation Club Gallery as *Artist of the Month*. Her watercolors, mostly inspired by familiar low country scenes, will be featured from Wednesday, November 2 through Wednesday, December 7. In addition, this exhibition and sale will include works in a variety of media by other LAA members.

A reception in honor of Penny will be held Sunday, November 13, from 5:00 – 6:30 PM in the Plantation Club Gallery. The reception features a members' bar with cheese and fruit buffet compliments of the Landings Art Association.

Penny, and her husband John, came to The Landings in 2008 from Mt. Sinai, NY where she taught high school mathematics for 35 years. Penny received her undergraduate bachelor's degree at SUNY/ Plattsburgh and her Master's Degree in Education at SUNY/Stony Brook. In Mt. Sinai and Port Jefferson she taught evening private classes and Adult Education classes in watercolors for more than 15 years. Her works continue to be sold in a variety of Long Island galleries and to numerous private collectors.

Penny is truly an “al fresco” woman whose many interests include golfing, tennis, gardening, biking, boating, walking, and just about any activity that keeps her out of doors. Through the long northern winters she took up painting to help pass the time that kept her indoors during those icy months. After just one beginning watercolor class, she was soon expressing her love of nature through her paintings. Penny also reads extensively and studies the works of other watercolorists she admires to help her discover how composition, water and pigment work together to create a story of mood, motion, space and texture. The result is her own personal creative style.

Penny says, “My work is just my way of expressing the beauty I find in nature and all the things surrounding me.” Boats, landscapes and flowers are her favorite subjects, but she often challenges herself to paint any subject that interests her. Working mostly from photographs, Penny can be seen regularly, camera in hand, exploring our lagoons, wildlife and coastal marshes at early morning, or sunset, capturing that magical moment to later inspire her in her studio.

A very involved member of The Landings community, Penny has noticed that finding time to paint has become a challenge. “New Neighbors”, “LWGA”, “Rusty Racquets,” Monday & Friday tennis groups”, “Landlovers”, “Wednesday & Saturday Golf Groups”, “The Landings Art Association,” her garden and her friends are just keeping her too busy. However, even with all these other activities, fortunately she finds time to continue to develop her painting talent. Furthermore, the LAA is grateful for her commitment to the organization, serving as co-president 2011-2012. Penny has entered the Merrill Lynch Spring juried show twice and has been awarded an Honorable Mention and a third place. With this well deserved recognition on which to build, it is her hope that gallery goers enjoy her paintings as much as she enjoys painting them!

Molly Wright: Savannah Book Festival, 2012



A painting by Molly Wright has been selected for the poster publicizing the 2012 Savannah Book Festival. The Savannah Book Festival is an annual world-class literary event bringing over 35 popular and critically acclaimed authors and thousands of readers together in historic Savannah, Georgia. It is free and open to the public. For more information, go to www.savannahbookfestival.org

Telfair Art Fair Open Art Gallery:

The Telfair Open Art Gallery exhibition will be on the second floor of the Jepson Center and can be viewed from November 1 through November 13.

LAA Members who have been accepted into this exhibit are *Sally Clark, Karen Macek, Penny Day Thompson, Suzanne Hokanson, Jan Vack, and Doug Herrick.*

Sally Clark at Indigo Sky Gallery



Sally Clark will be exhibiting paintings with quilts by Abigail Kokai from November 14-December 4 at the Indigo Sky Gallery, 915 Waters Avenue. The Exhibition is titled "Interwoven Dialogues." The title of this piece is "The Joker is Wild."

LAA Holiday Party, December 13:

LAA Holiday Party flyer can be found on the following page:

<http://www.landingsart.org/site/node/1117> .

Membership Report as of October 1, 2011

Total members to date: 155 (2 members included as summer last month renewed)

Total members this month: 60 renewals: 56 new: 4

Single: 39 Couple: 17 Sponsor: 3 Patron: 1

Merrill Lynch Annual Fall Art Show: Friday, Nov. 4 – Friday, Nov. 7

Reception, Thursday, Nov. 3, 5:30-8:30 p.m. (invitation only)

By invitation only, the wine and light hors d'oeuvres opening reception will be held on Thursday, November 3, 2011, from 5:30 – 8:30 p.m. The show is free of charge and open to the public Friday, November 4, 10:00 a.m. – 4:00 p.m. and Monday through Friday, November 7 to 11, 10:00 a.m. – 4:00 p.m. You can vote for your favorite artist during the times the show is open; however, please vote only once.

The show promises to be a splendid showcase of the variety of talents in the Landings Art Association. Please plan to submit your work and to attend the show. For information and to volunteer your time contact: Dana Boden 598- 0814 or Billie Collins 598-7950.

IMPORTANT DATES:

Saturday, Oct. 29: 1:30 – 4:00 p.m. Drop off art work at Merrill Lynch Building. To expedite this process, download the application form at <http://www.landingsart.org/site/node/1095> and take it with you to Merrill Lynch.

Thursday, Nov. 3, Wine and Hors D'oeuvres reception by invitation only. (artists that submit work receive 2 tickets for reception)

Friday, Nov. 4 and Monday – Friday, Nov. 7-11 from 10 a.m. to 4 p.m. each day show will be open to the public.

Saturday, Nov. 12, 9:30 – 11:30 a.m. – Pick up all art work.

St. Paul's Episcopal Church "Small Works Art Market," Nov. 6-Jan. 2

Opening Reception: Sunday, Nov. 13, 3:00 – 5:00 p.m., at St. Paul's

St. Paul's Episcopal Church will host the 2nd Annual Small Works Art Market, a group show of small works for sale during the Christmas season to provide an opportunity for the community to purchase one-of-a-kind, 2-dimensional art for gifts or to add to their personal collections. Works must be no larger than 18x18, retail priced at \$250 or less with gallery retaining 25%, suitable for family viewing, in any medium. For more information contact Judy Naylor-Johnson at 912-228-1643 or email her at jnaylorj@gmail.com. St. Paul's is located at 1802 Abercorn (34th and Abercorn). Drop Off Dates: Thursday, October 20, 5:30 to 7:30 p.m. and Monday, October 24 from 9:30 -11:30 a.m.

IMPORTANT REMINDERS - Plantation Gallery - IMPORTANT REMINDERS

Change-over day for the Plantation Club Gallery is Wednesday, November 2, from 10:00 a.m. 'til Noon.

Artist of the Month reception, honoring Penny Day Thompson, is Sunday, November 13, from 5:00-6:30 p.m. in the Plantation Club Gallery.

December is Gift of Art month. Start thinking about what you will offer for this special holiday exhibition and sale. Any questions, contact Martha Hough (598-7109 or mchough@verizon.net) or Sally Jones (598-5488 or Sally4th@bellsouth.net), Plantation Club Gallery Coordinators

Calling all Artists and Creative People: Safe Shelter CHAIRity Affair, December 3



Safe Shelter is a non-profit organization that assists battered women and their children. A group of friends of Safe Shelter are sponsoring a unique and fun way to raise much needed \$\$ to support this worthwhile cause – A Chair Auction! An old chair or stool can be brought back to life with creativity and ingenuity! Create that perfect garden accent, front porch treasure, kid's or whatever room accent with some paint, plants and lots of imagination. Chairs will be auctioned off on December 3 at an event to be held at the Plantation Club. All contributing artists will be entitled to a discounted ticket to the event (50% off the ticket price of \$75). All proceeds to benefit Safe Shelter. A tax receipt will be provided. Find a chair with character and transform it to a work of art or one-of-a-kind conversation piece. For more information on how you can participate contact Lorraine Boice (lboice@bellsouth.net or 598-1342). We need you! The registration form was included with the September Newsletter. To download the registration form, go to www.landingsart.org, click on Calendar & Events on left of screen, and then click on October 31 for more information and the registration form.

Officers and Committees for 2011-2012:

Co-Presidents: Penny Sebrell (pennysebrell@aol.com, 598-8262)
and Penny Thompson (ppandjt@comcast.net, 344-4149)
Co-Vice Presidents: Chad Hoover (chad@chadhooverart.com,)
and Rebecca Willis (Rebecca.willis@rocketmail.com, 598-2964)
Secretary: Sally Jones (sally4th@bellsouth.net, 598-5488)
Treasurer: Mark Davis (davismands@comcast.net, 598-5479)
Membership: Nancy Dancu (nancydancu@bellsouth.net, 598-0434)
Program: Margie Sone Gravina (margiesone@hotmail.com, 920-8451)
Communications: Suzanne Croci (crocis@bellsouth.net, 598-2876)
Newsletter: Joyce Weinzettel (jweinzettel@comcast.net, 925-2097)
Fall Sidewalk Sale: Tina Austing (ntausting@comcast.net), 598-0029
Fall Merrill Lynch Show: Dana Boden, 598-2814; Billie Collins, 598-7950

Visit our Website: www.landingsart.org

Items for the website should be sent to Rochelle Frank, 598-2179: ar_frank@msn.com.

Send items to be emailed to the membership to Suzanne Croci, 598-2876: crocis@bellsouth.net.

Items for the monthly newsletter go to Joyce Weinzettel, 925-2097, jweinzettel@comcast.net. *Deadline is 20th of each month.*